

Highlights

Business Aligned

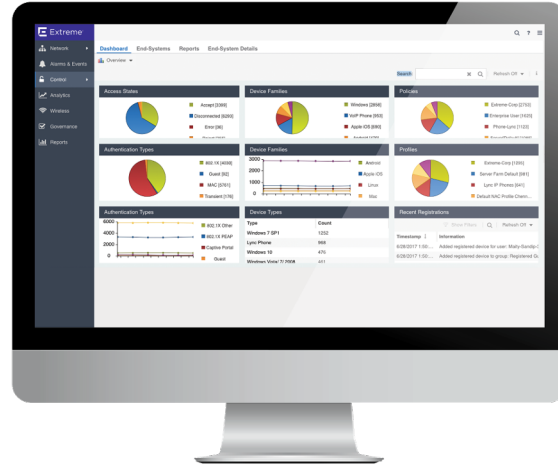
- Let your business imperatives drive the network with context driven policies
- Protect corporate data by proactively preventing unauthorized users, compromised endpoints, and other vulnerable systems from network access
- Securely enable critical initiatives like BYOD and IoT
- Effectively balance security and availability for users, contractors and guests
- Roll out consistent policies from the edge to the data center
- Leverage pricing aligned with your business needs with per-user pricing

Access Security

- Dynamic role-based network access control based on contextual identity information
- Tight integration with third party solutions such as NGFW, SIEM, CMDB, internet security and EMM/MDM
- Proactively secure guest access and BYOD onboarding
- Built-in device profiling with internal and external profiling techniques Integrated agent-based and agentless security posture assessment
- Secure IoT network access

Operational Efficiency

- Accelerate troubleshooting by separating network from application issues
- Spend less time monitoring applications with automatic performance alerting
- Simplify management across your entire network with one single pane of glass for management, policies, access control and application analytics
- Avoid service disruptions with pro-active performance monitoring and alerts



ExtremeControl™

Keep your network edge secure with end-point security.

With most data breaches starting at end-points, you need granular control over users and IoT devices and consistent policies across the entire network into multicloud. Our access control solution gives you centralized in-depth visibility and control over all end-points across your wired and wireless networks through one simple, flexible and easy to consume dashboard.

ExtremeControl securely enables BYOD and IoT to protect your network against external threats. It lets you centrally manage and define granular policies so you can meet compliance obligations, locate, authenticate and apply targeted policies to users and devices.

For extended access policy, you can roll out the same policies automatically from the [Smart OmniEdge](#) to the [Automated Campus](#) into the [Agile Data Center](#).

Our network access control solution is integrated with [major enterprise platforms](#) including solutions for network security, enterprise mobility management, analytics, cloud and data center. In addition, it offers an open northbound API for customized integrations to key enterprise platforms.

Secure Your Network with Granular Policy Control and In-Depth Visibility

ExtremeControl enables you to apply granular controls over who, what, when, where, and how endpoints are allowed on the network. You can enable secure BYOD, guest access and IoT by rolling out real-time policies based on the security posture of devices. ExtremeControl matches endpoints with attributes, such as user, time, location, vulnerability, or access type, to create an all-encompassing contextual identity. Role based identities follow a user, no matter from where or how she connects to the network. They can be used to enforce highly secure access policies.

Setting granular policies and scaling them across your network automatically, makes it possible to comply to internal policies and external regulations. With one click you can enforce context-driven policies across devices for QoS, bandwidth and other parameters and align them to your business imperatives. Advanced reporting of all user valid authentications and failures with a real-time state table of all connected users and devices alerts you to potential issues.

In the face of constant network transformation you can use micro segmentation for consistent security without the need for complex network changes. When rolling out large projects, reduce risk by testing new policies and using passive policies for what-if-scenarios prior to enforcement. ExtremeControl lets you identify threats by profiling and tracking users and devices, as well as monitoring the health and compliance of devices before and after access. It assesses your network with policy audits and hit reports.

ExtremeControl also offers third party policy support, via user-based ACLs, ensuring granular control of your entire network, including Extreme and third party equipment.

Super Easy and Secure Onboarding for Guests and IoT Devices

Our Guest and IoT Manager enables IT to set up easy to use onboarding templates that enables non-technical staff to provision new users and devices. Additionally, we offer a set of REST APIs to allow programmatic onboarding of users and devices.

To provide a smooth experience for visitors the Guest and IoT Manager also includes an MS Outlook plugin that automatically creates a network access account to people based on Microsoft Outlook Calendar events.

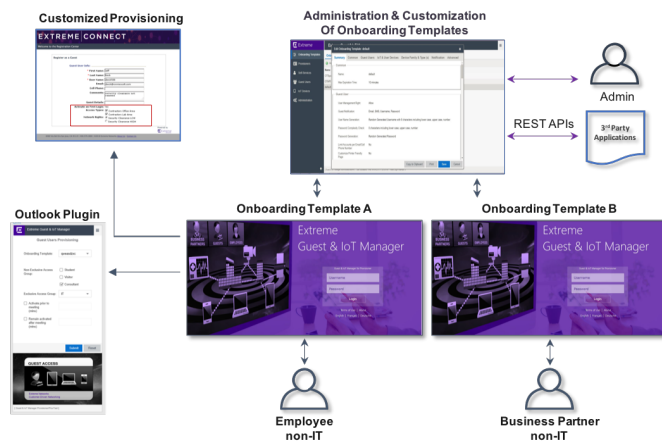


Figure 1: Guest and IoT Manager

Our identity-aware solution automatically manages expiration, account validity and time control for guest accounts without any IT involvement. Securely and easily onboard guests and BYOD devices with extensive customization, branding and sponsor-based approvals. Built-in device profiling using various internal and external profiling techniques makes sure only devices that comply to your policies can access your network. Users can log into their Yahoo or Salesforce account to complete guest registration.

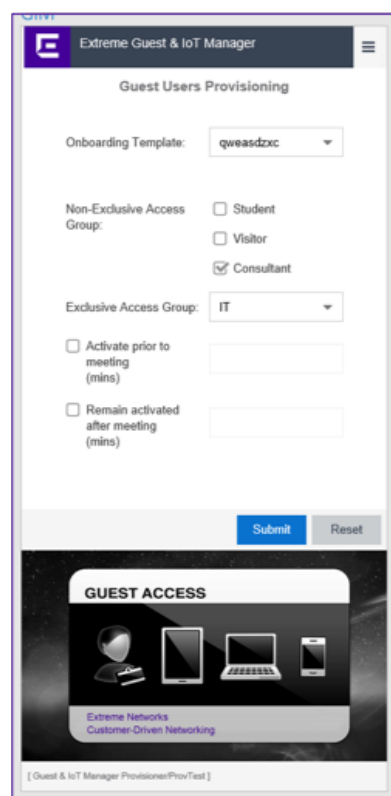


Figure 2: Microsoft Outlook Calendar Plugin

To prevent access of your network from non-compliant and un-enrolled devices we make integration with our EMM/ MDM partners, such as Airwatch, Citrix and MobileIron easy. Additionally, integrated agent-based and agentless security posture assessments with the ability to integrate external solutions like scanners and endpoint security solutions are available.

Onboarding for BYOD or guest policies is made easy and secure with our self-service portal that offers texting and social login based identity. It lets users manage devices according to business policies. Devices are automatically provisioned, profiled, and a security posture complying to your security policies is set up. At the same time, employees can get their devices onto the network without requiring IT assistance.

Get Visibility Across Your Network with Advanced Reporting and Alerting

ExtremeControl makes it easy to monitor issues on your network – all on one simple-to-read dashboard. It sends you advanced, customizable reports and alerts about the authentication, guest access, onboarding, device profiles and authentication, as well as end-system health.

Reduce Security Vulnerabilities with End-System Posture Assessment

ExtremeControl offers both, agent-based and agentless assessment option. We can install either a persistent or dissolvable agent on the client end system or the agent can be downloaded via a captive portal website. It can also be installed via a software distribution system such as Group Policy or System Center Configuration Manager. The agentless assessment does not require an installation or running of any software on the end system.

Expand Security Integrations with Next-Generation Firewalls

Our ExtremeControl is integrated with our ecosystem of partners to expand network security and threat response. Based on alerts from next-generation firewall solutions, we orchestrate endpoint isolation and remediation. We share contextual information such as users, IP address and location for powerful policy enforcement at perimeter firewalls. Policies based on ID-IP mapping follow users.

Appliance Options

Hardware Appliances

Our ExtremeControl appliances are rack-mountable servers with all capabilities pre-installed. Purchased applications (licensed separately) are activated via license keys:

- The ExtremeControl Appliance IA-A-25, manages up to 12K end systems
- The ExtremeControl Appliance -IA-A-305, manages up to 24K end systems

Virtual Appliances

ExtremeControl can also be installed as a virtual appliance that customers can download at purchase. The ExtremeControl, virtual engines must be deployed on a VMWare or Hyper-V server with a disk format of VHDX.

- The VMWare Management Center virtual engines are packaged in the.OVA file format (defined by VMware)
- The Hyper-V Management Center virtual engines are packaged in the .ZIP file format

Hardware Appliance Specifications

| Product Part Number | IA-A-25 (87100) | IA-A-305 (87101) |
|------------------------------|---|---|
| Appliance Specifications | | |
| Storage | 150GB Enterprise SSD | 240GB Enterprise SSD |
| Networking | 2 x 1GbE | 2 x 1GbE |
| TPM Version 2.0 | Yes | Yes |
| Appliance Scale Number | | |
| Access Control End-Systems | Up to 12,000 | Up to 24,000 |
| Power Specifications | | |
| Redundant Power Supply | 750W 80+ Platinum Hot Pluggable | 750W 80+ Platinum Hot Pluggable |
| AC Input Voltage | 90Hz to 132V and 180V to 264V | 90Hz to 132V and 180V to 264V |
| AC Input Frequency | 47Hz to 63Hz | 47Hz to 63Hz |
| Physical | | |
| Rackmount/Dimensions | 1U Rack/16.93" x 27.95" x 1.72" | 1U Rack/16.93" x 27.95" x 1.72" |
| Weight | 29 lb. (13.15 kg) Max | 29 lb. (13.15 kg) Max |
| Environmental Specifications | | |
| Operating | <ul style="list-style-type: none"> • ASHRAE Class A2 – Continuous Operation. 10° C to 35° C (50° F to 95° F) with the maximum rate of change not to exceed 10°C per hour • ASHRAE Class A3 – Includes operation up to 40C for up to 900 hrs per year. • ASHRAE Class A4 – Includes operation up to 45C for up to 90 hrs per year. | <ul style="list-style-type: none"> • ASHRAE Class A2 – Continuous Operation. 10° C to 35° C (50° F to 95° F) with the maximum rate of change not to exceed 10°C per hour • ASHRAE Class A3 – Includes operation up to 40C for up to 900 hrs per year. • ASHRAE Class A4 – Includes operation up to 45C for up to 90 hrs per year. |
| Shipping | -40° C to 70° C (-40° F to 158° F) | -40° C to 70° C (-40° F to 158° F) |
| Humidity (Shipping) | 50% to 90%, non-condensing with a maximum wet bulb of 28° C (at temperatures from 25° C to 35° C) | 50% to 90%, non-condensing with a maximum wet bulb of 28° C (at temperatures from 25° C to 35° C) |
| Vibration (Unpackaged) | 5 Hz to 500 Hz 2.20 g RMS random | 5 Hz to 500 Hz 2.20 g RMS random |
| Warranty | | |
| Hardware | 1 Year Parts and Labor | 1 Year Parts and Labor |

Assessment Agent OS Requirements

The table below outlines the supported operating systems for end-systems connecting to the network through an ExtremeControl deployment that is implementing agent-based assessment.

Additionally, the end-system must support the operating system disk space and memory requirements as provided by Microsoft® and Apple®.

| Operating System | | Operating System Disk Space | Available/Real Memory |
|------------------|--|-----------------------------|----------------------------------|
| Windows | Windows* Windows Vista Windows XP Windows 2008 Windows 2003 Windows 7 Windows 8 Windows 8.1 Windows 10 | 80 MB | 40 MB (80 MB with Service Agent) |
| Mac OS | Tiger Snow Leopard Lion Mountain Lion Mavericks Yosemite El Capitan Sierra | 10 MB | 120 MB |

Note: Certain assessment tests require the Windows Action Center (previously known as Windows Security Center) which is supported on Windows XP SP2+, Windows Vista, and Windows 7, Windows 8, and Windows 8.1 operating systems.

ExtremeControl Supported End-System Browsers

The following table outlines the supported desktop and mobile end-system browsers connecting to the network through the Mobile Captive Portal of ExtremeControl.

| Browser | | Version |
|---------|--|------------------------------|
| Desktop | Microsoft Edge | 41 and later |
| | Microsoft Internet Explorer | 11 and later |
| | Mozilla Firefox | 34 and later |
| | Google Chrome | 33.0 and later |
| | Safari | All Versions |
| Mobile | Internet Explorer Mobile | 11 and later (Windows Phone) |
| | Microsoft Edge | All Versions |
| | Microsoft Windows 10 Touch Screen Native (Surface Table) | N/A |
| | Safari | 7 and later |
| | iOS Native | 9 and later |
| | Android Chrome | 4.0 and later |
| | Android Native | All Versions |
| | Dolhin | All Versions |
| | Opera | |

Ordering Information

ExtremeControl offers two types of pricing models:

- Perpetual licenses model
- Subscription licenses model

Perpetual Licenses

| Part Number | Description |
|---|---|
| NAC Enterprise Licenses | |
| IA-ES-1K | NAC Enterprise License for 1K end-systems |
| IA-ES-3K | NAC Enterprise License for 3K end-systems |
| IA-ES-12K | NAC Enterprise License for 12K end-systems |
| Optional Sec Posture Assessment Licenses | |
| IA-PA-3K | Optional Sec Posture Assessment for 3K end-systems |
| IA-PA-12K | Optional Sec Posture Assessment for 12K end-systems |
| Optional Guest and IoT Onboarding Licences | |
| IA-GIM-1K | Optional Guest and IoT Onboarding 1K users/devices |
| IA-GIM-3K | Optional Guest and IoT Onboarding 3K users/devices |
| IA-GIM-12K | Optional Guest and IoT Onboarding 12K users/devices |

Subscription Licenses

ExtremeControl (97207-27001)

Includes unlimited number of end-system licenses up to performance limit and ExtremeWorks for these licenses, priced per user per year.

Warranty

As a customer-centric company, Extreme Networks is committed to providing quality products and solutions. In the event that one of our products fails due to a defect, we have developed a comprehensive warranty that protects you and provides a simple way to get your product repaired or media replaced as soon as possible.

The appliance comes with a one year warranty against manufacturing defects. Software warranties are ninety (90) days and cover defects in media only. For full warranty terms and conditions please go to:

<http://learn.extremenetworks.com/rs/641-VMV-602/images/Extreme-Networks-Product-Warranty.pdf>

Service and Support

Extreme Networks provides comprehensive service offerings that range from Professional Services to design, deploy and optimize customer networks, customized technical training, to service and support tailored to individual customer needs. Please contact your Extreme Networks account executive for more information about Extreme Networks Service and Support.

For more information, please contact Chi Corporation, your authorized Extreme Partner.



John Thome, President
Chi Corporation
5265 Naiman Parkway, Cleveland, Ohio 44139
440-498-2310 (office direct) 216-533-1511 (cell)
jthome@chicorporation.com
ChiCorporation.com



©2018 Extreme Networks, Inc. All rights reserved. Extreme Networks and the Extreme Networks logo are trademarks or registered trademarks of Extreme Networks, Inc. in the United States and/or other countries. All other names are the property of their respective owners. For additional information on Extreme Networks Trademarks please see <http://www.extremenetworks.com/company/legal/trademarks>. Specifications and product availability are subject to change without notice. 4334-1218-10